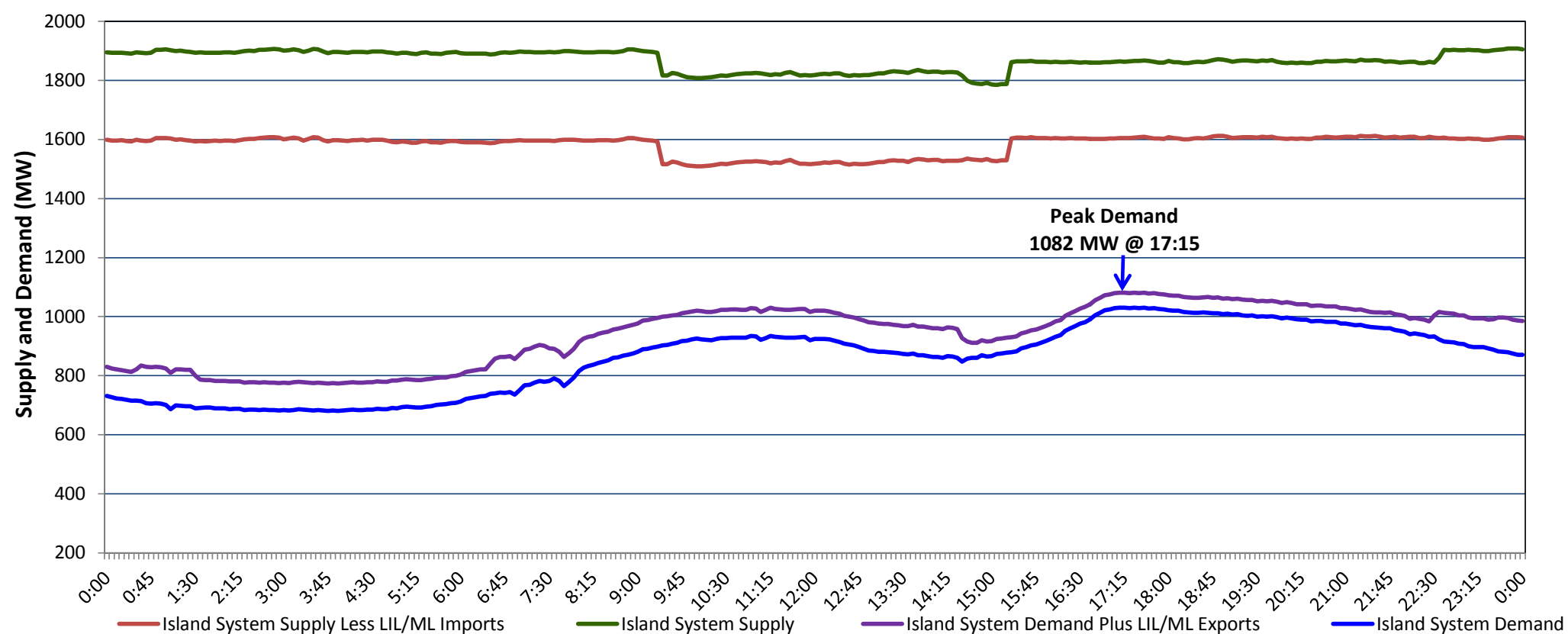


**Newfoundland Labrador Hydro (NLH)  
Supply and Demand Status Report Filed Monday, November 22, 2021**

**Section 1  
Island Interconnected System Supply, Demand & Exports  
Actual 24 Hour System Performance For Saturday, November 20, 2021**



**Supply Notes For November 20, 2021**

- 1,2
- A As of 0804 hours, May 26, 2021, Holyrood Unit 1 unavailable due to planned outage (170 MW).
  - B As of 0850 hours, July 25, 2021, Bay d'Espoir Unit 5 unavailable due to planned outage (76.5 MW).
  - C As of 0830 hours, November 12, 2021, Holyrood Unit 2 unavailable (170 MW).
  - D As of 1954 hours, November 19, 2021, Holyrood Unit 3 available at 135 MW (150 MW).
  - E At 0922 hours, November 20, 2021, Bay d'Espoir Unit 3 unavailable due to planned outage (76.5 MW).
  - F At 1518 hours, November 20, 2021, Bay d'Espoir Unit 3 available (76.5 MW).

**Section 2  
Island Interconnected Supply and Demand**

Sun, Nov 21, 2021	Island System Outlook <sup>3</sup>		Seven-Day Forecast	Temperature (°C)		Island System Daily Peak Demand (MW)	
				Morning	Evening	Forecast	Adjusted <sup>7</sup>
Available Island System Supply: <sup>5</sup>	1,890	MW	Sunday, November 21, 2021	-1	-3	1,220	1,126
NLH Island Generation: <sup>4,8</sup>	1,260	MW	Monday, November 22, 2021	-2	1	1,145	1,052
NLH Island Power Purchases: <sup>6</sup>	110	MW	Tuesday, November 23, 2021	3	5	1,165	1,072
Other Island Generation:	220	MW	Wednesday, November 24, 2021	8	8	1,035	943
ML/LIL Imports:	300	MW	Thursday, November 25, 2021	10	8	1,045	953
Current St. John's Temperature & Windchill:	-1 °C	-5 °C	Friday, November 26, 2021	9	7	1,005	913
7-Day Island Peak Demand Forecast:	1,220	MW	Saturday, November 27, 2021	7	8	1,025	933

**Supply Notes For November 21, 2021**

- 3
- Notes:
1. Generation outages for running and corrective maintenance are included. These are not unusual for power system operations. They generally do not impact customer supply. The power system operators schedule outages to system equipment whenever possible to coincide with periods when customer demands are low and sufficient supply reserves are available. However, from time to time equipment outages are necessary and reserves may be impacted.
  2. Due to the Island system having no synchronous connections to the larger North American grid, when there is a sudden loss of large generating units there may be a requirement for some customer's load to be interrupted for short periods to bring generation output equal to customer demand. This automatic action of power system protection, referred to as under frequency load shedding (UFLS), is necessary to ensure the integrity and reliability of system equipment. Under frequency events have typically occurred 5 to 8 times per year on the Island Interconnected System and the resultant customer load interruptions are generally less than 30 minutes. With the activation of the Maritime Link frequency controller during the winter of 2018, UFLS events have occurred less frequently.
  3. As of 0800 Hours.
  4. Gross output including station service at Holyrood (24.5 MW) and improved NLH hydraulic output due to water levels (35 MW).
  5. Gross output from all Island sources (including Note 4).
  6. NLH Island Power Purchases include: CBPP Co-Gen, Nalcor Exploits, Rattle Brook, Star Lake, Wind Generation and capacity assistance (when applicable).
  7. Adjusted for curtailable load, market activities and the impact of voltage reduction when applicable.
  8. Due to limitations inherent in the design of combustion turbines, the output of combustion turbines may be reduced in the event that ambient temperatures exceed the threshold required for full rated output. This threshold is dependent on the design of each turbine.

**Section 3  
Island Peak Demand Information  
Previous Day Actual Peak and Current Day Forecast Peak**

Sat, Nov 20, 2021	Actual Island Peak Demand <sup>8</sup>	17:15	1,082 MW
Sun, Nov 21, 2021	Forecast Island Peak Demand		1,220 MW

- Notes: 8. Island Demand / LIL / ML Exports (where applicable) is supplied by NLH generation and purchases, plus generation owned and operated by Newfoundland Power and Corner Brook Pulp & Paper (Deer Lake Power, DLP).